

CLAYSTONE SCULPTURE KIT PROJECTS

© 2012

by Sandra K. Little



ROCK BOX

Choose a pleasingly shaped rock or large stone for this project. In lieu of a rock, a piece of fruit, potato, Styrofoam object and the like may be used. Cover the rock with wet paper towels to keep clay from sticking to it. (*Figure 1*) On a sheet of wax paper or freezer paper, roll out a $\frac{1}{4}$ " to $\frac{1}{2}$ " thick circular sheet of clay large enough to cover $\frac{1}{2}$ of the rock. (*Figure 2*)

Figure 1



Figure 2

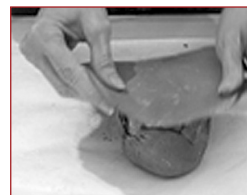


Wrap this sheet of clay around the bottom half of your rock. (*Figure 3*) Roll out a second sheet of clay in the same size to cover the top half of the rock. (*Figure 4*) Trim edges (saving them for later) and press the two halves of clay together where they meet in the middle.

Figure 3



Figure 4



CLAYSTONE SCULPTURE KIT PROJECTS

© 2012

by Sandra K. Little

ROCK BOX (cont'd)

The clay "rock" can be textured at this time by pressing the enclosed texture sheet into clay to achieve your desired look. You can also use a piece of cloth, sandpaper, or lace to press into the clay. Use your imagination!

Take the trimmed edges you set aside, form a handle and attach it to the top of your box smoothing its edges onto the box top. (*Figure 5*) Retexture around edges of handle. Let dry 1 - 2 hours.

While clay is still soft but hard enough to hold its shape, use the carving knife to cut the box into two sections forming a top lid and a bottom. An uneven or wavy cut makes it easier to refit the two pieces. Gently separate lid and its bottom from rock and remove paper towel lining. Refit top and bottom together and leave to dry completely. (*Figure 6*)

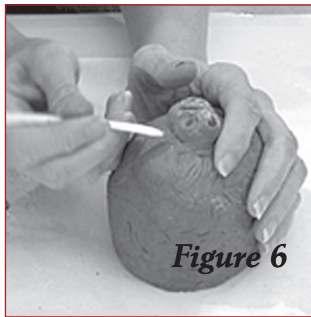


Figure 5

Figure 6



Figure 6

PIN/NECKLACE

(FROM A CUTTER OR TEMPLATE)

On a sheet of wax paper or freezer paper roll out enough clay to accommodate the size of your cutter or template. (*Figure 7*) Sprinkle talcum powder or cornstarch on the clay or rub it on rolling pin to prevent the clay from sticking. Clay should be rolled to between ¼" to ½" thickness depending on the size of the cutter or template and the look you want to achieve. Larger pieces should be rolled slightly thicker to prevent breakage.

Press your cutter into clay or trace the template onto clay with the needle tool. Then cut it out with the carving knife provided. (*Figure 8; Figure 9*)

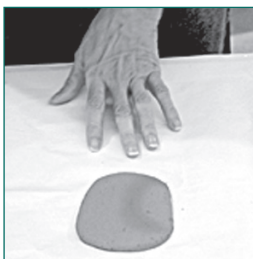


Figure 7



Figure 8



Figure 9

CLAYSTONE SCULPTURE KIT PROJECTS

© 2012

by Sandra K. Little

PIN/NECKLACE (cont'd)

Remove any excess clay from the edges with one of the modeling tools. (*Figure 10*) Smooth edges of piece (*Figure 11*) either with a tool or fingers.

If the piece is to be used as a necklace, use a straw to pierce a hole for hanging by pressing straw straight down, twisting, and pulling straight up.

Set the piece aside to dry, turning it at intervals or placing on rack to assure even drying. Clay is dry when it no longer feels damp or cold to the touch. Drying time varies according to the size of the project, larger projects taking longer to dry. (*Figure 12*)



Figure 10



Figure 11



Figure 12

MEDALLION

(FROM A MOLD)

We're going to make a medallion from a mold. Once you've created the mold you can use it over and over to make numerous medallions.

To make the mold, choose an item that you'd like to make into a medallion such as a pin or button. Roll a ball of clay smoothly between your palms. Flatten it using your palm or a rolling pin on a wax papered surface. Brush or rub talcum powder on either the clay or the item you've chosen for the mold. (*Figure 13*) Press the item directly into the clay and remove easing item straight up out of clay. (*Figure 14*) Set the mold aside to dry as in the project above. Once dry, this mold can be used numerous times as any purchased mold can. (*Figure 15*)



Figure 13



Figure 14



Figure 15

CLAYSTONE SCULPTURE KIT PROJECTS

© 2012

by Sandra K. Little

MEDALLION (cont'd)

To make the medallion, prepare your mold, either purchased or self-made, by brushing it with either talcum powder or corn starch. Using a piece of clay large enough to fill the mold, roll it between the palms of your hands to form a smooth ball. Press this balled clay gently into the prepared mold. (*Figure 16*)

Remove it from the mold and cut off excess clay from the edges. (*Figure 17*) Smooth the edges and leave to dry as described previously.



Figure 16



Figure 17



Half-Moon Medallion

FINISHING YOUR PIECES

Once projects are completely dry, they can be finished in a variety of ways - left natural; sprayed or brushed with a clear gloss or matte finish; painted with acrylic paints; embossed with embossing powder; or given a metallic finish using a Patina Kit.

After finishing, use leather strip to string necklace or attach self-adhesive magnet to back for a refrigerator magnet. Jewelry findings, such as pin backings, can be purchased at craft stores and glued to smaller pieces.

TIPS

Keep a small bowl of water and (paper) towel handy to clean hands and tools. Tools work best when not covered with hardened clay. A clean, moistened finger is a great tool for smoothing edges. Always keep unused clay in an airtight container or plastic bag.



405 Skillman Road, Skillman, NJ 08558

Ph: 609-466-2986 Fax: 888-529-1980 SculptureHouse.com